

Project by

QURTUBA
DEVELOPMENTS

ليفورا

LEVORA

RESIDENCE

Embrace the New Era







Since 2019, Qurtuba Developments has been redefining real estate in the Delta region, delivering over 50 residential and commercial projects in New Mansoura, New Damietta, and beyond.

With a focus on more than just prime locations and quality finishes, Qurtuba creates developments that mark real milestones in people's lives. Today, the company is expanding into hotels, administrative, and commercial projects, continuing its journey of growth and innovation.

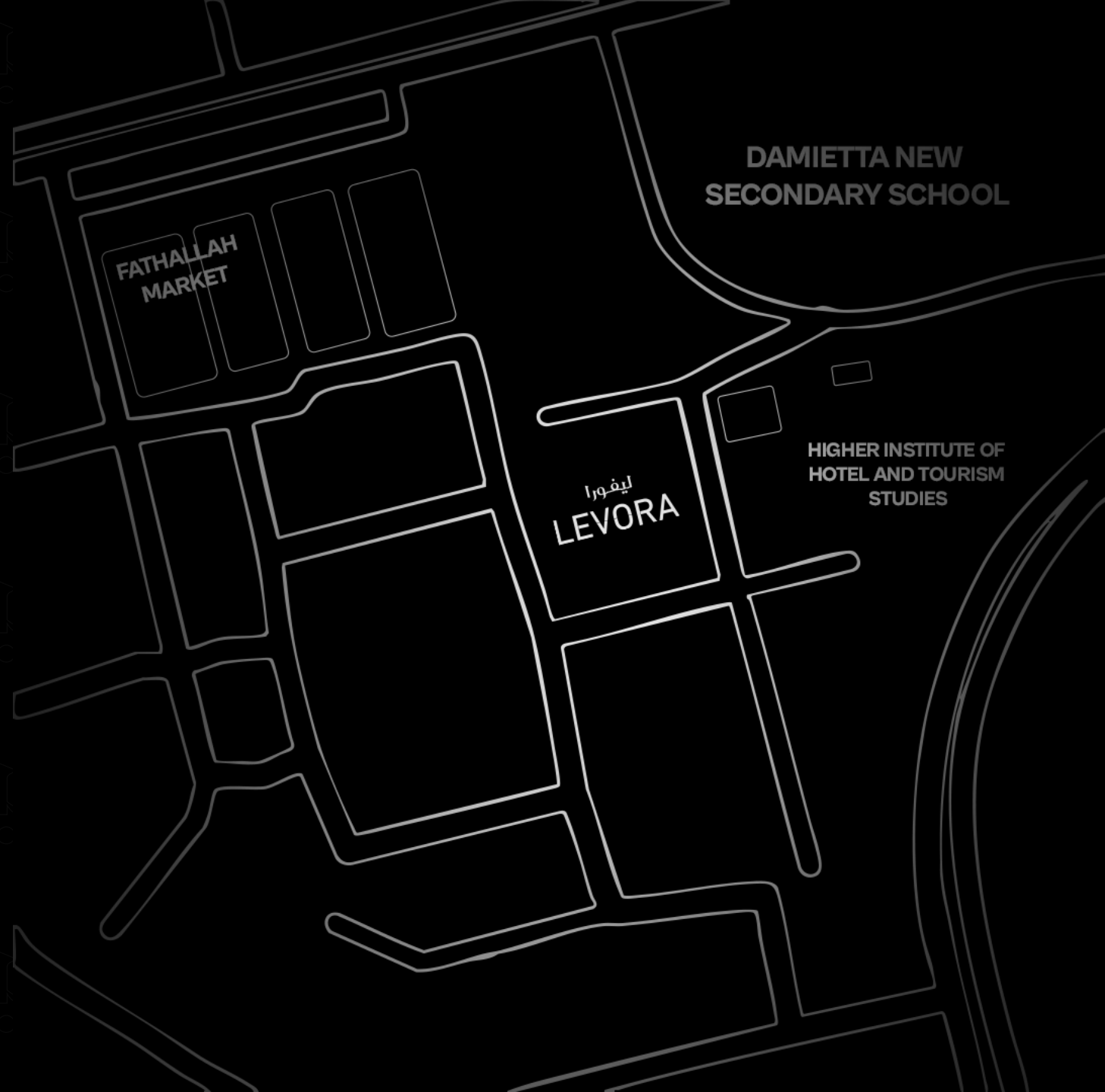
ليفورا LEVORA RESIDENCE

Levora is a modern development designed to blend elegance with functionality in the heart of New Damietta. Its architecture reflects a contemporary vision, offering a seamless mix of residential comfort and urban convenience.

With private entrances, smart layouts, and a welcoming ambiance, Levora provides an exclusive living experience where every detail is crafted to enhance daily life. It's not just a building—it's a place where style meets practicality, and where residents can truly feel at home.

Location

Levora is strategically located on **Al Mahgoub Street**, right next to the **First District Service Center**. Surrounded by key facilities, the project is steps away from **three commercial and administrative plots**, an **institute**, a **hospital**, a **school**, and the well-known **Fathallah Supermarket**. This prime location ensures convenience and accessibility to everything you need.





Project Layout



Project Layout

09



ليفورا
LEVORA

Project Layout

Massimo Dutti

YVES SAINT LAURENT

YVES SAINT LAURENT

Calvin Klein

Massimo Dutti

10

ليفورا

LEVORA





ليفورا

LEVORA





ZARA

Mossimo Dotti

YVES SAINT LAURENT

YVES SAINT LAURENT

Levora offers a thoughtfully planned environment where every element serves to enhance residents' comfort and convenience. The building features private entrances for each section, dedicated elevators, and smart layouts that ensure privacy and ease of movement.

Levora is designed to combine convenience with privacy. The ground floor hosts retail spaces, while the upper floors are dedicated to residential units.

The building is divided into four sections, each with a private entrance and elevator—two on the east and two on the west. Each floor includes four apartments, totaling 16 units across the residential levels , While the commercial area consists of 36 to 40 shops.

APARTMENT TYPE A1

GROSS AREA 114.4 m2

RECIPTION

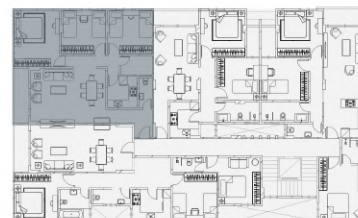
BEDROOMS 3

BATHROOMS 2

KITCHEN



PLAN

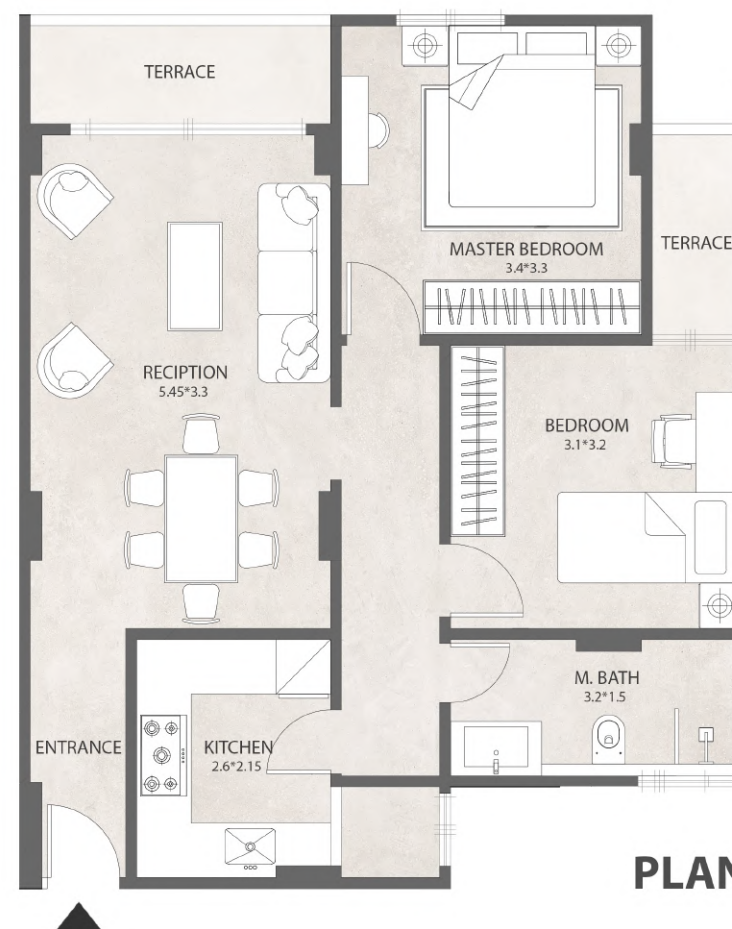


KEY PLAN

APARTMENT TYPE A2

GROSS AREA 90.45 m2

RECIPTION	
BEDROOMS	2
BATHROOMS	1
KITCHEN	



PLAN



KEY PLAN

APARTMENT TYPE A3

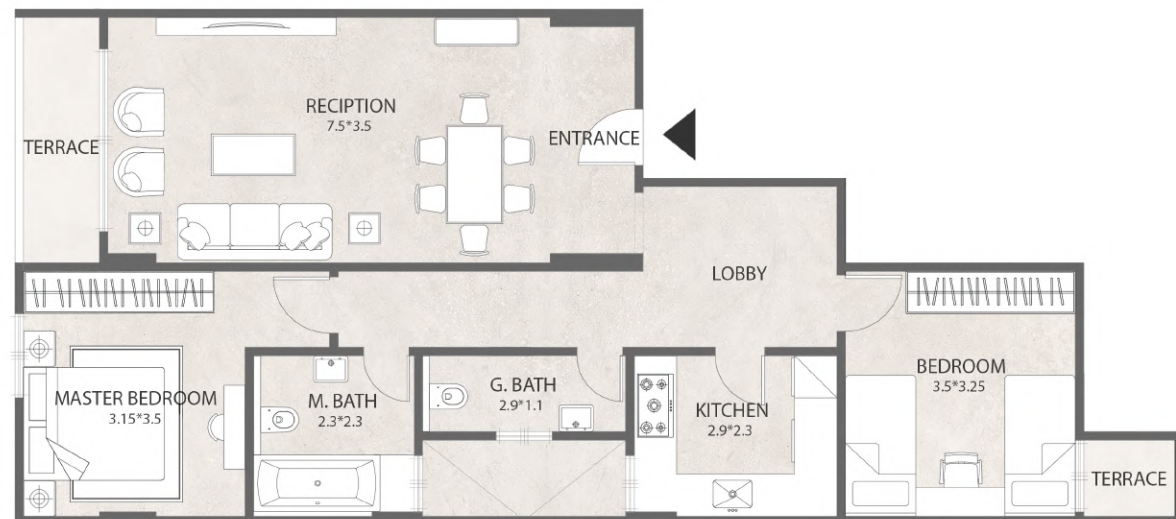
GROSS AREA 95.1 m2

RECIPTION

BEDROOMS 2

BATHROOMS 2

KITCHEN



PLAN



KEY PLAN

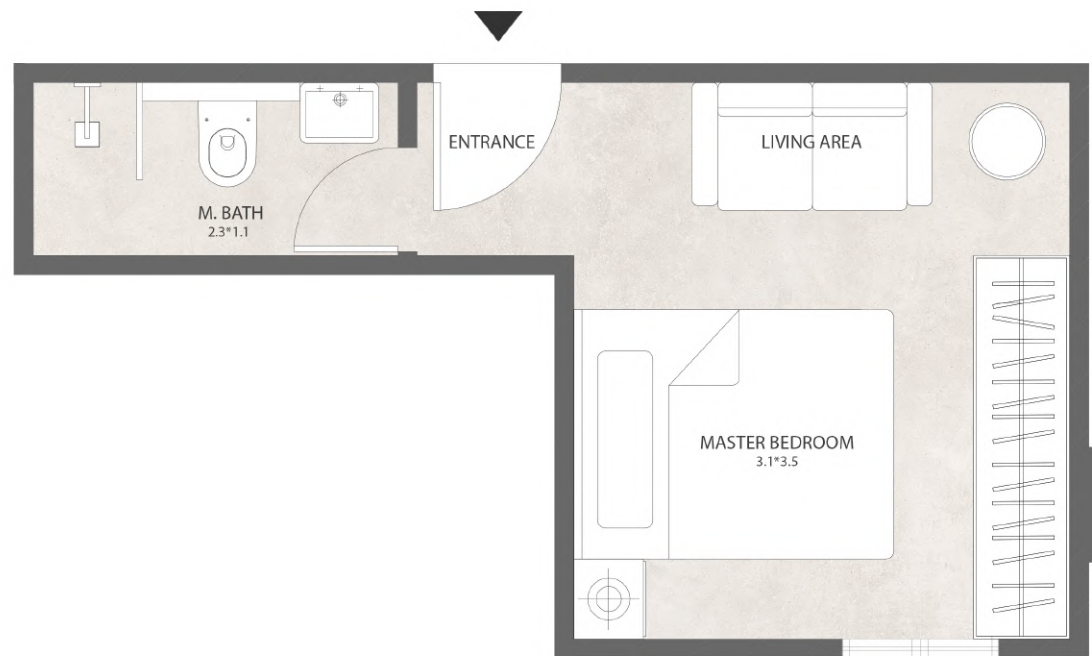
APARTMENT TYPE A4

GROSS AREA 19.3 m2

BEDROOM

BATHROOM

LIVING AREA



PLAN



KEY PLAN

APARTMENT TYPE A5

GROSS AREA 93.1 m2

RECIPTION

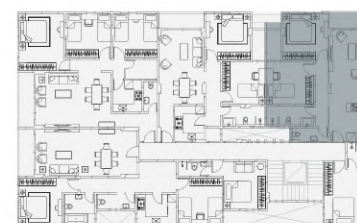
BEDROOMS 1

BATHROOMS 2

KITCHEN



▲ PLAN



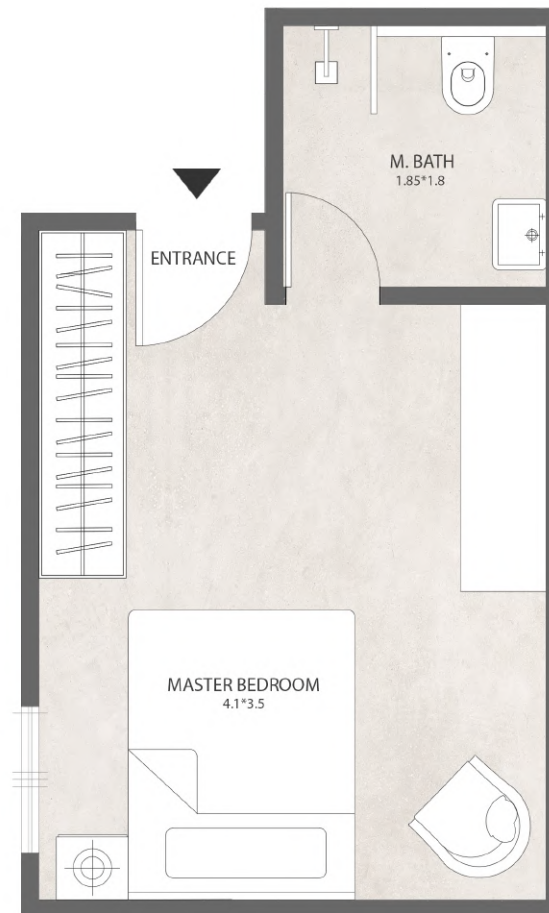
KEY PLAN

APARTMENT TYPE A6

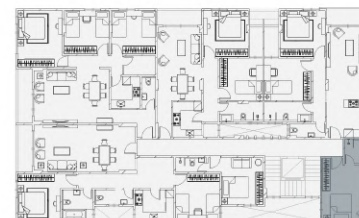
GROSS AREA 25.3 m2

BEDROOM

BATHROOM



PLAN

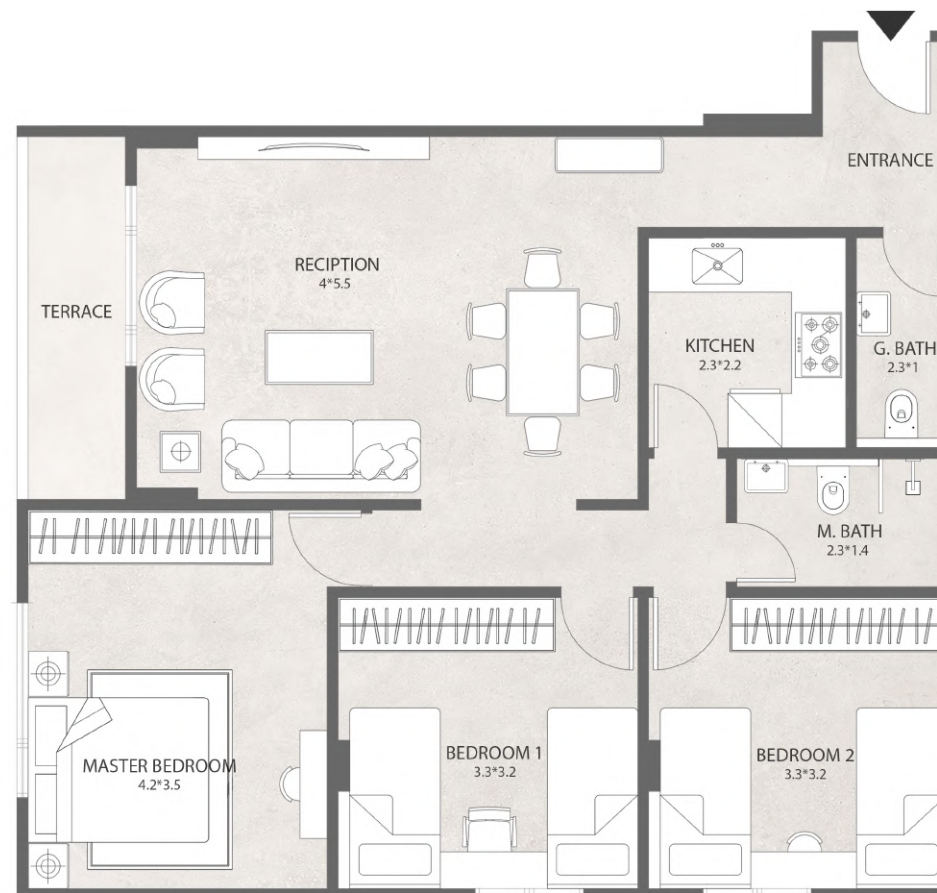


KEY PLAN

APARTMENT TYPE B1

GROSS AREA 114.4 m2

RECEPTION	
BEDROOMS	3
BATHROOMS	2
KITCHEN	



PLAN



KEY PLAN

APARTMENT TYPE B2

GROSS AREA 90.45 m²

RECIPTION

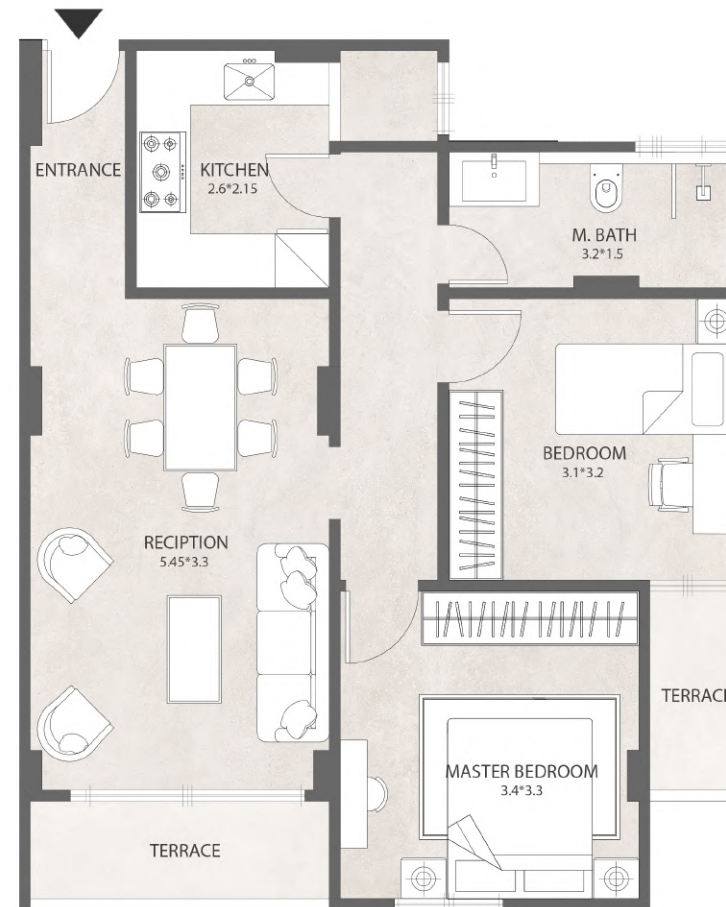
BEDROOMS

2

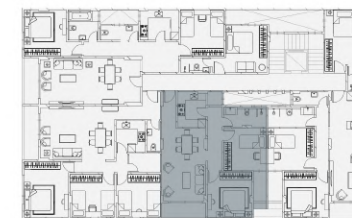
BATHROOMS

1

KITCHEN



PLAN



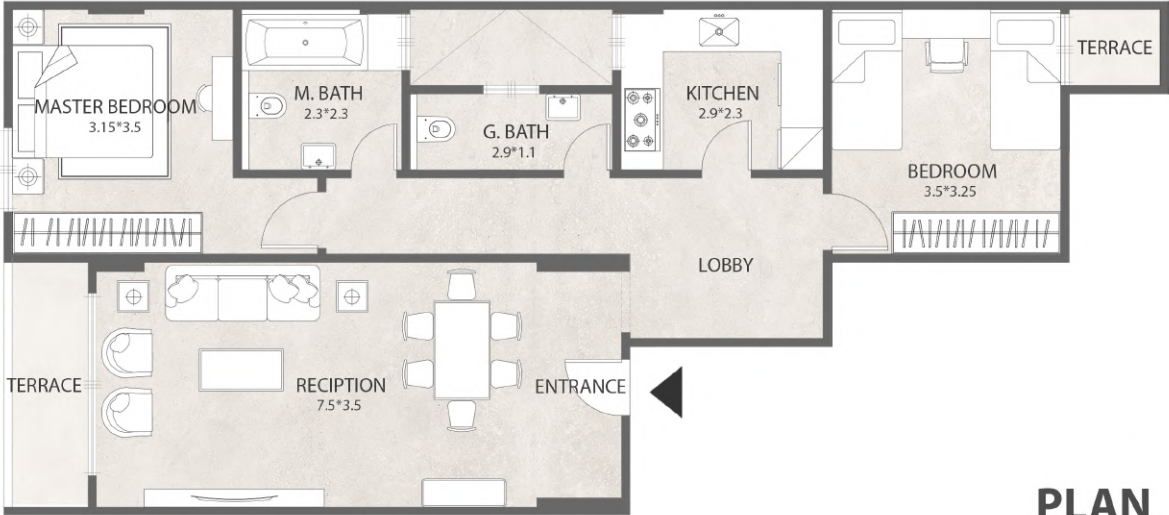
KEY PLAN

APARTMENT

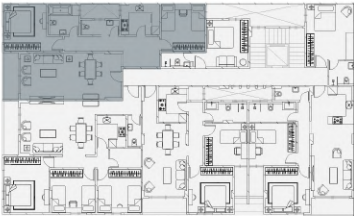
TYPE B3

GROSS AREA 95.1 m2

RECIPTION	
BEDROOMS	2
BATHROOMS	2
KITCHEN	



PLAN



KEY PLAN

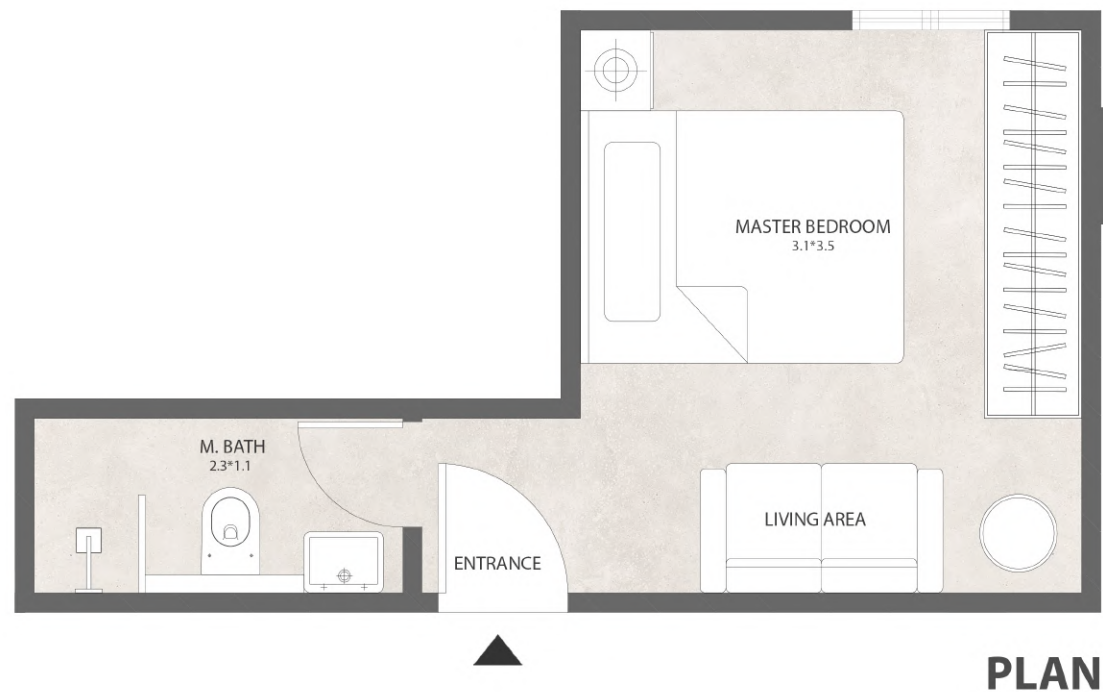
APARTMENT TYPE B4

GROSS AREA 19.3 m2

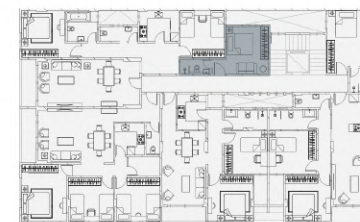
BEDROOM

BATHROOM

LIVING AREA



PLAN



KEY PLAN

APARTMENT TYPE B5

GROSS AREA 93.1 m2

RECIPTION

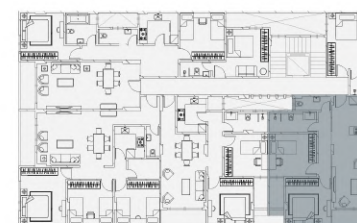
BEDROOMS 1

BATHROOMS 2

KITCHEN



PLAN



KEY PLAN

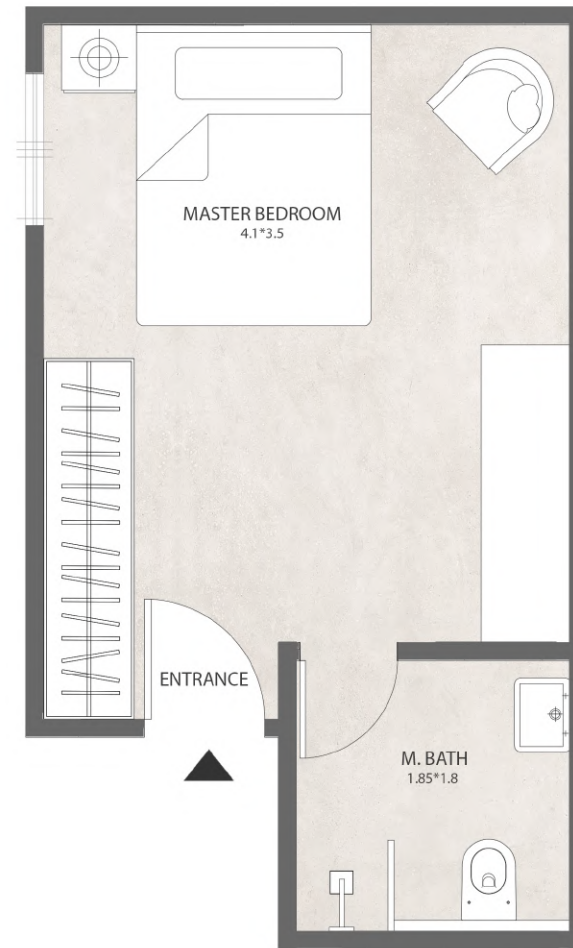
APARTMENT

TYPE B6

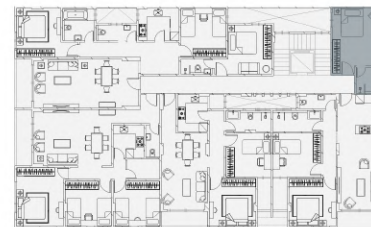
GROSS AREA 25.3 m2

BEDROOM

BATHROOM



PLAN



KEY PLAN

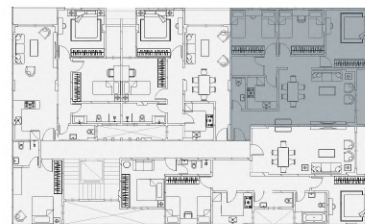
APARTMENT TYPE C1

GROSS AREA 114.4 m2

RECIPTION	
BEDROOMS	3
BATHROOMS	2
KITCHEN	



PLAN



KEY PLAN

APARTMENT TYPE C2

GROSS AREA 90.45 m2

RECIPTION

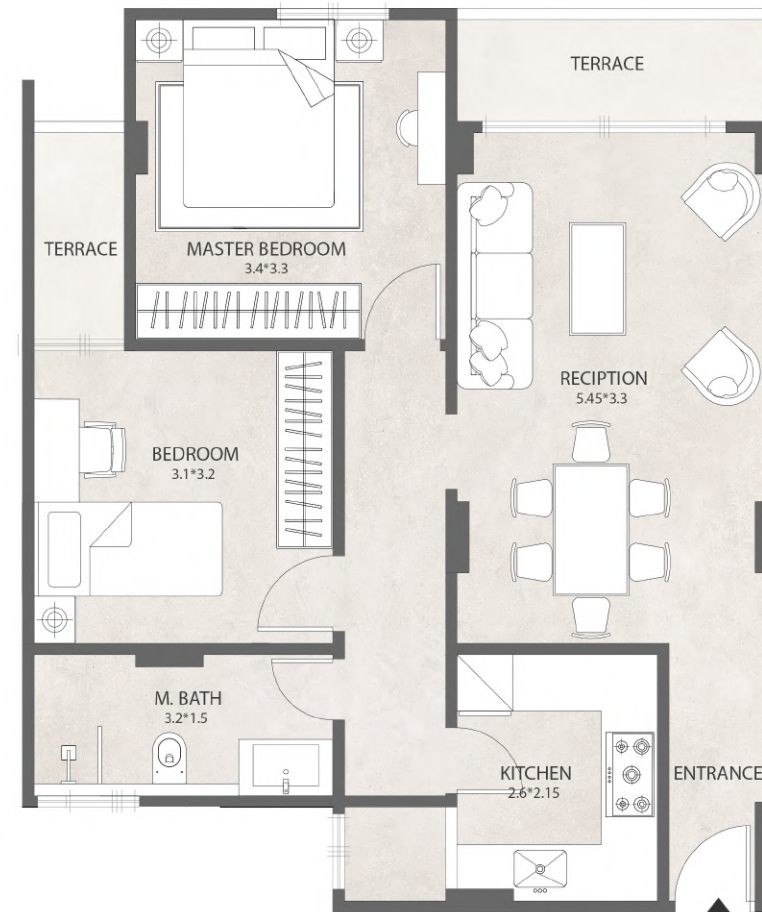
BEDROOMS

2

BATHROOMS

1

KITCHEN



PLAN



KEY PLAN

APARTMENT TYPE C3

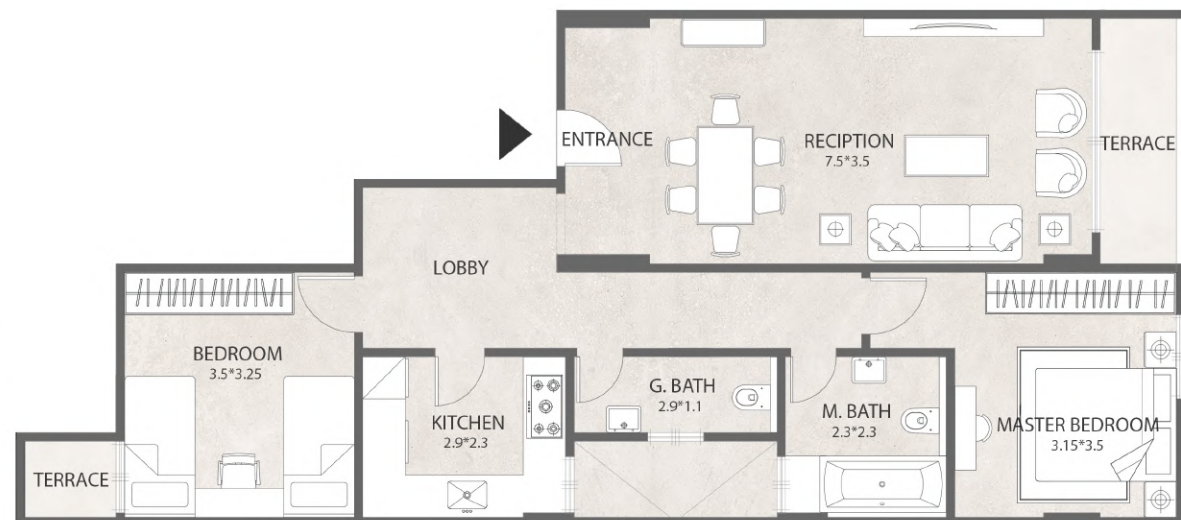
GROSS AREA 95.1 m2

RECIPTION

BEDROOMS 2

BATHROOMS 2

KITCHEN



PLAN



KEY PLAN

APARTMENT TYPE C4

GROSS AREA 19.3 m2

BEDROOM

BATHROOM

LIVING AREA



PLAN



KEY PLAN

APARTMENT TYPE C5

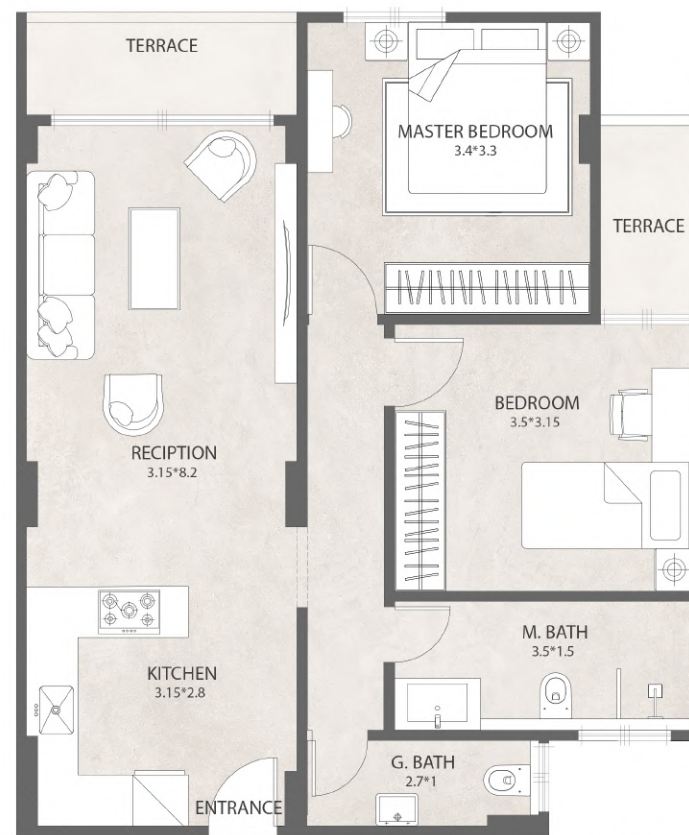
GROSS AREA 93.1 m2

RECIPTION

BEDROOMS 1

BATHROOMS 2

KITCHEN



PLAN



KEY PLAN

APARTMENT TYPE C6

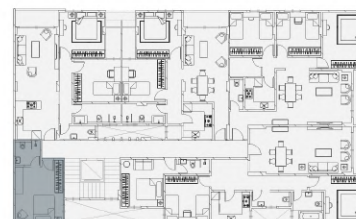
GROSS AREA 25.3 m2

BEDROOM

BATHROOM



PLAN

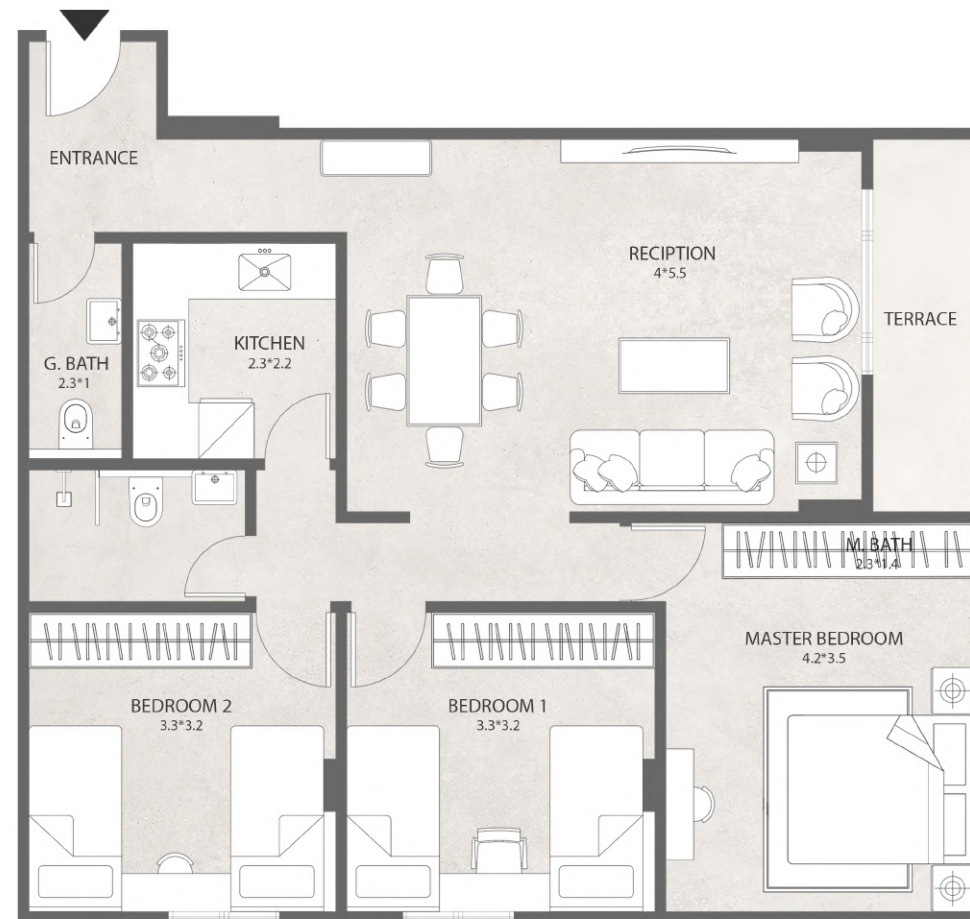


KEY PLAN

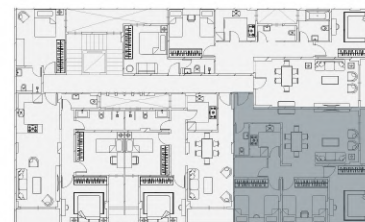
APARTMENT TYPE D1

GROSS AREA 114.4 m2

RECIPTION	
BEDROOMS	3
BATHROOMS	2
KITCHEN	



PLAN



KEY PLAN

APARTMENT TYPE D2

GROSS AREA 90.45 m²

RECIPTION

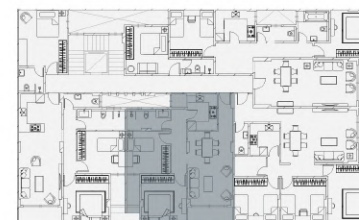
BEDROOMS 2

BATHROOMS 1

KITCHEN



PLAN



KEY PLAN

APARTMENT TYPE D3

GROSS AREA 95.1 m2

RECIPTION

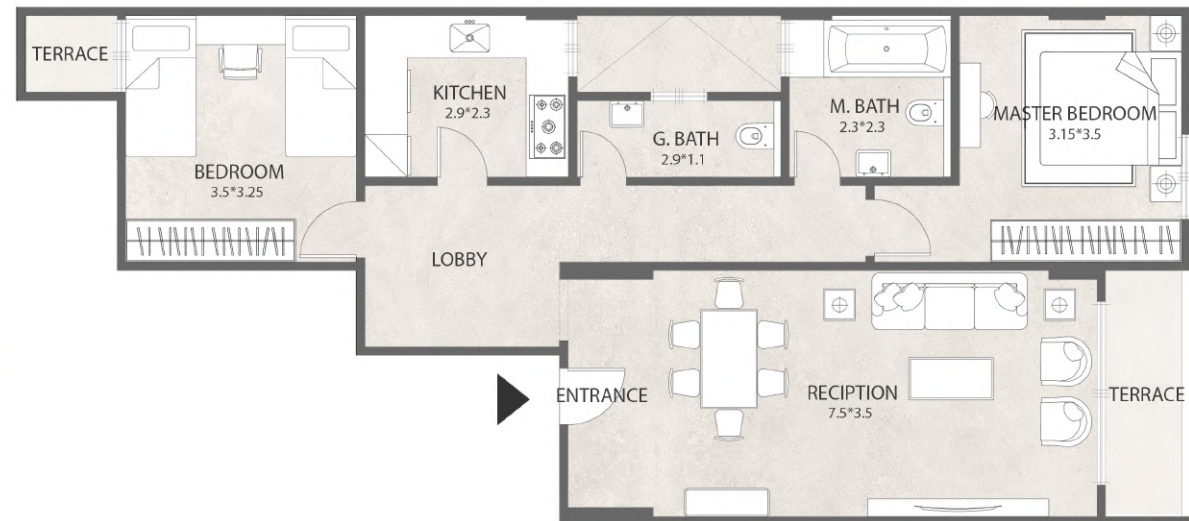
BEDROOMS

2

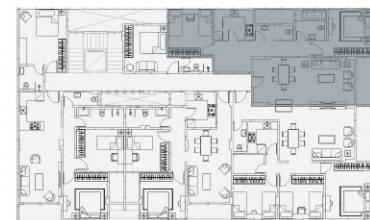
BATHROOMS

2

KITCHEN



PLAN



KEY PLAN

APARTMENT

TYPE D4

GROSS AREA 19.3 m²

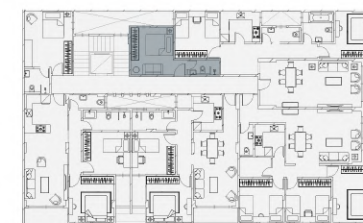
BEDROOM

BATHROOM

LIVING AREA



PLAN



KEY PLAN

APARTMENT TYPE D5

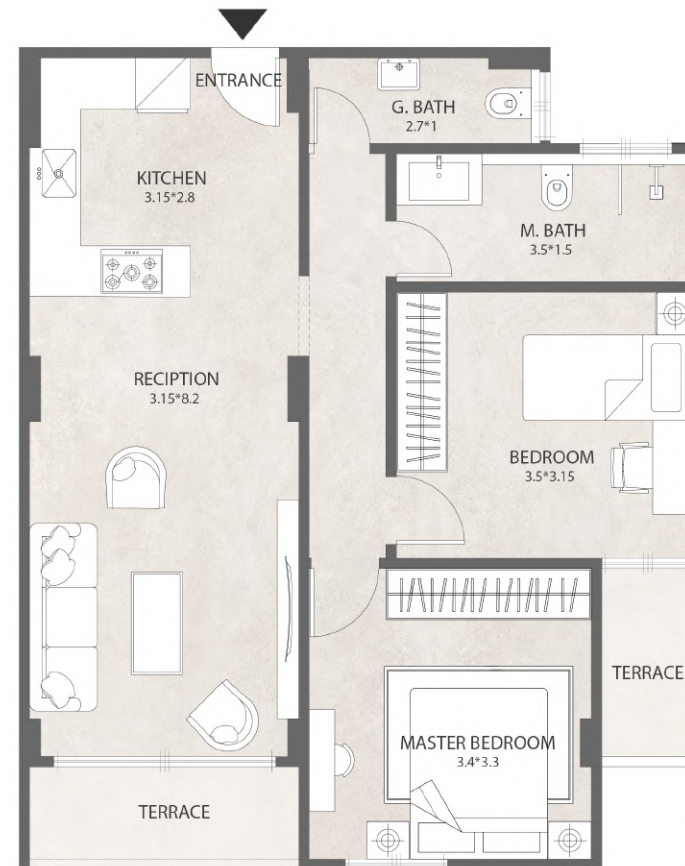
GROSS AREA 93.1 m2

RECIPTION

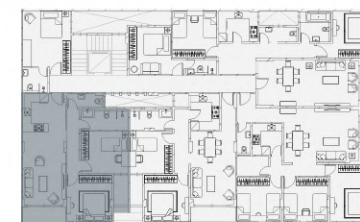
BEDROOMS 1

BATHROOMS 2

KITCHEN



PLAN



KEY PLAN

APARTMENT

TYPE D6

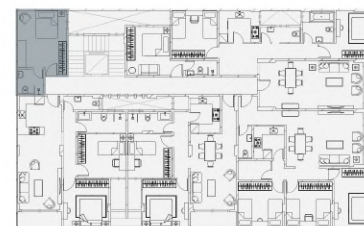
GROSS AREA 25.3 m²

BEDROOM

BATHROOM



PLAN



KEY PLAN

Our Strategic Partners

keva
INTERIOR AND ARCHITECTURE

**IN
CM**TM

**H
TIME**
HOTELS

ARCHRETE

Project by

QURTUBA
DEVELOPMENTS

ليفورا

LEVORA

RESIDENCE

Embrace the New Era