

نزل

NUZUL

HOTEL & RESIDENCES

A New Era of Smart Living

Project by **QURTUBA**
DEVELOPMENTS











Since 2019, Qurtuba Developments has been redefining real estate in the Delta region, delivering over 50 residential and commercial projects in New Mansoura, New Damietta, and beyond.

With a focus on more than just prime locations and quality finishes, Qurtuba creates developments that mark real milestones in people's lives. Today, the company is expanding into hotels, administrative, and commercial projects, continuing its journey of growth and innovation.



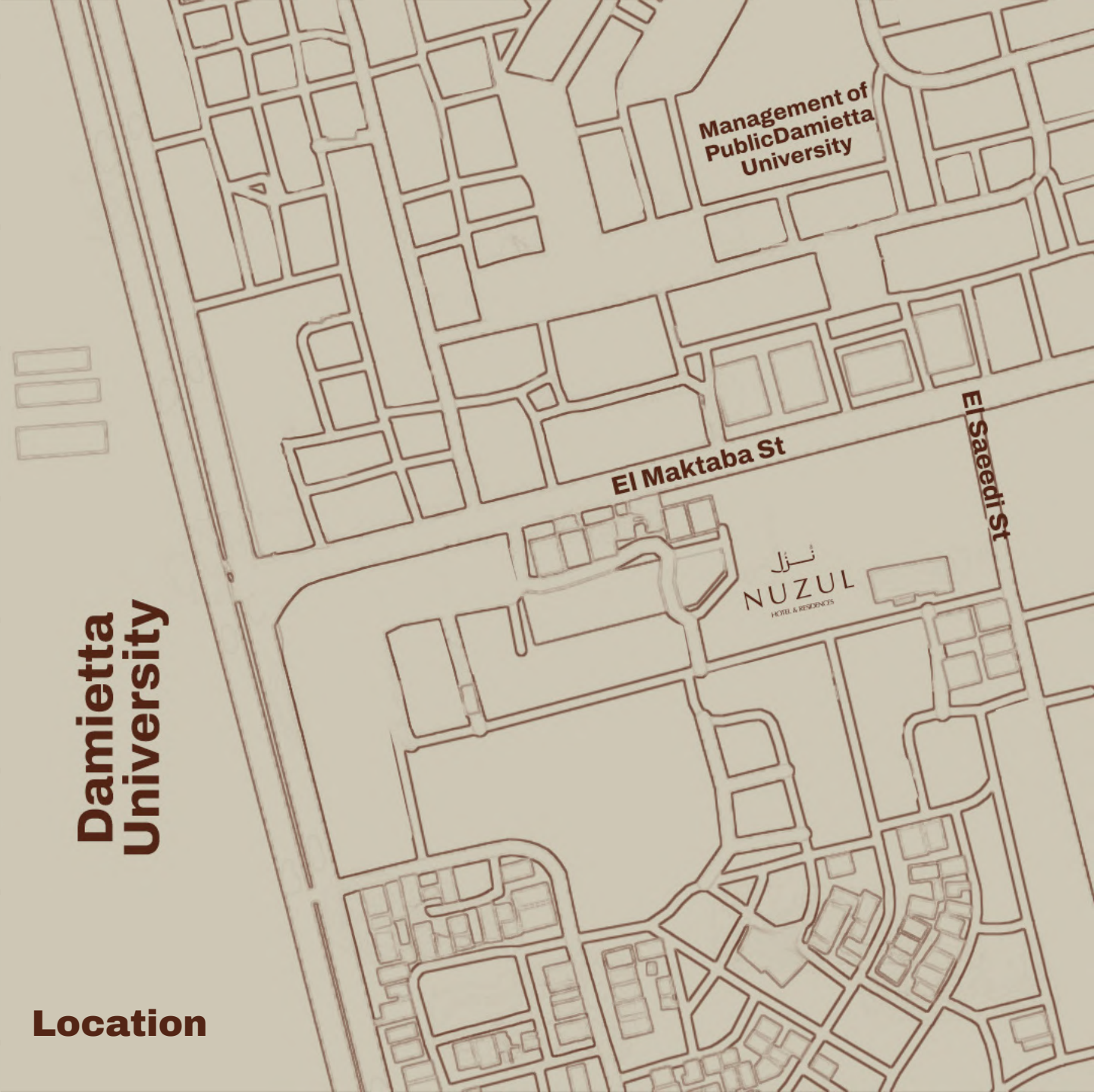
In the heart of New Damietta City, Nuzul Hotel offers a unique investment experience with its prime location in the Fourth District, just steps away from the university, where vibrancy meets comfort in a lively setting.

The project features a modern design with open spaces that create a relaxing atmosphere and stunning views. Nuzul Hotel offers a variety of smartly designed units to suit different investment needs, along with flexible payment plans for easy purchasing, and a guaranteed rental return for a limited period to ensure a secure and profitable investment.

Nuzul Hotel is strategically located in the Fourth District of New Damietta City, at the intersection of Al-Saidi New Street and Al-Maktaba Street, right in the heart of a vibrant and dynamic area. Its proximity to the university and major city landmarks makes it an ideal destination for both investors and visitors.

Damietta University

Location















1.A full range of facilities designed to ensure comfort, convenience, and a premium experience.

2.Modern amenities that meet the needs of both guests and investors.

3.Smart building technologies enhancing efficiency and functionality.

4.Well-planned common areas that elevate daily living quality.

5.Professional property management providing seamless operations.

6.High-quality services tailored to deliver an exceptional stay and a hassle-free investment experience.









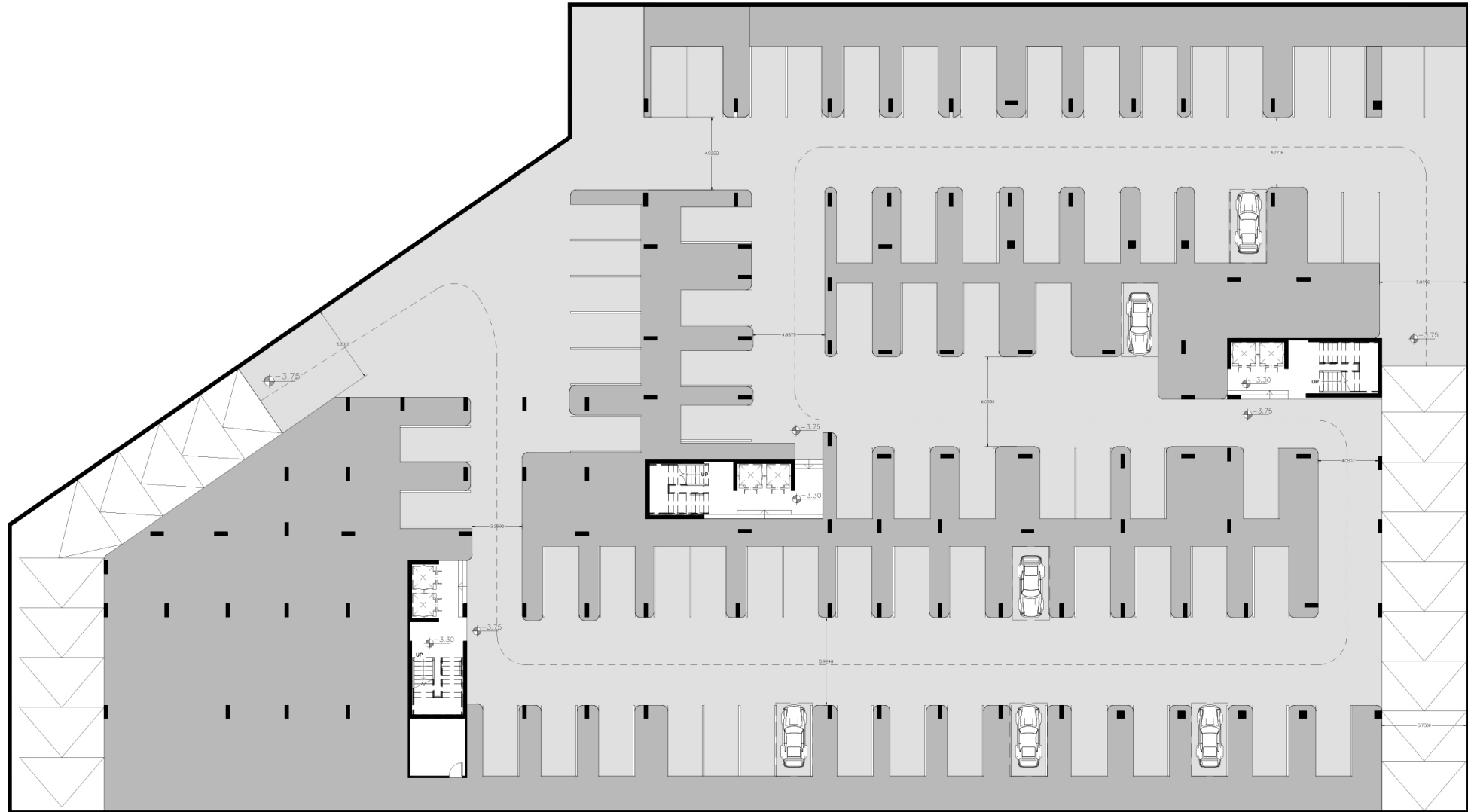








Nuzul Hotel consists of a ground floor and three upper floors, with each floor featuring 42 units. In total, the building includes 126 units, all designed with smart layouts and modern finishes to cater to various investment and accommodation needs.





Plot Area: 4614 m²

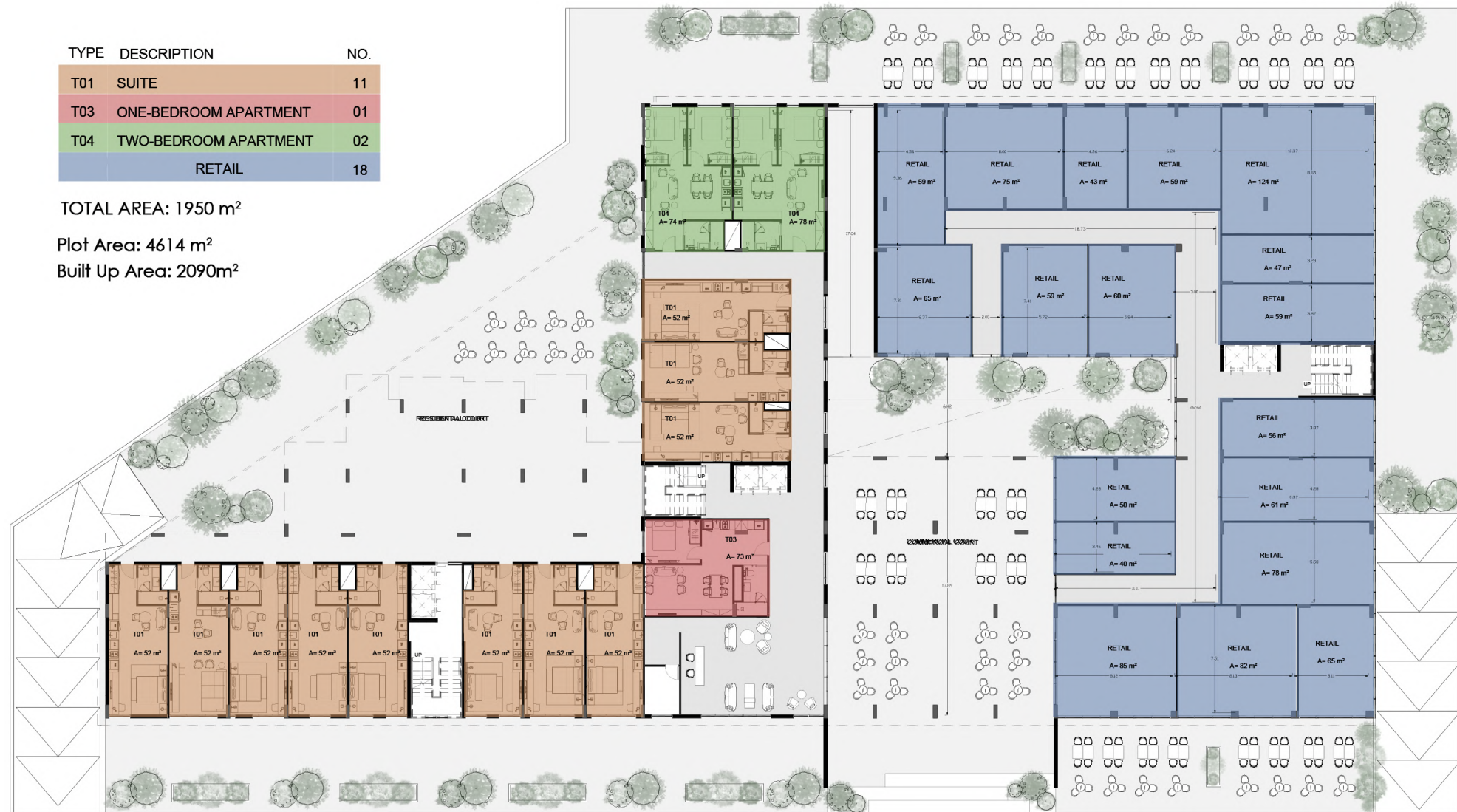
Built Up Area: 2090 m²

TYPE	DESCRIPTION	NO.
T01	SUITE	11
T03	ONE-BEDROOM APARTMENT	01
T04	TWO-BEDROOM APARTMENT	02
	RETAIL	18

TOTAL AREA: 1950 m²

Plot Area: 4614 m²

Built Up Area: 2090m²



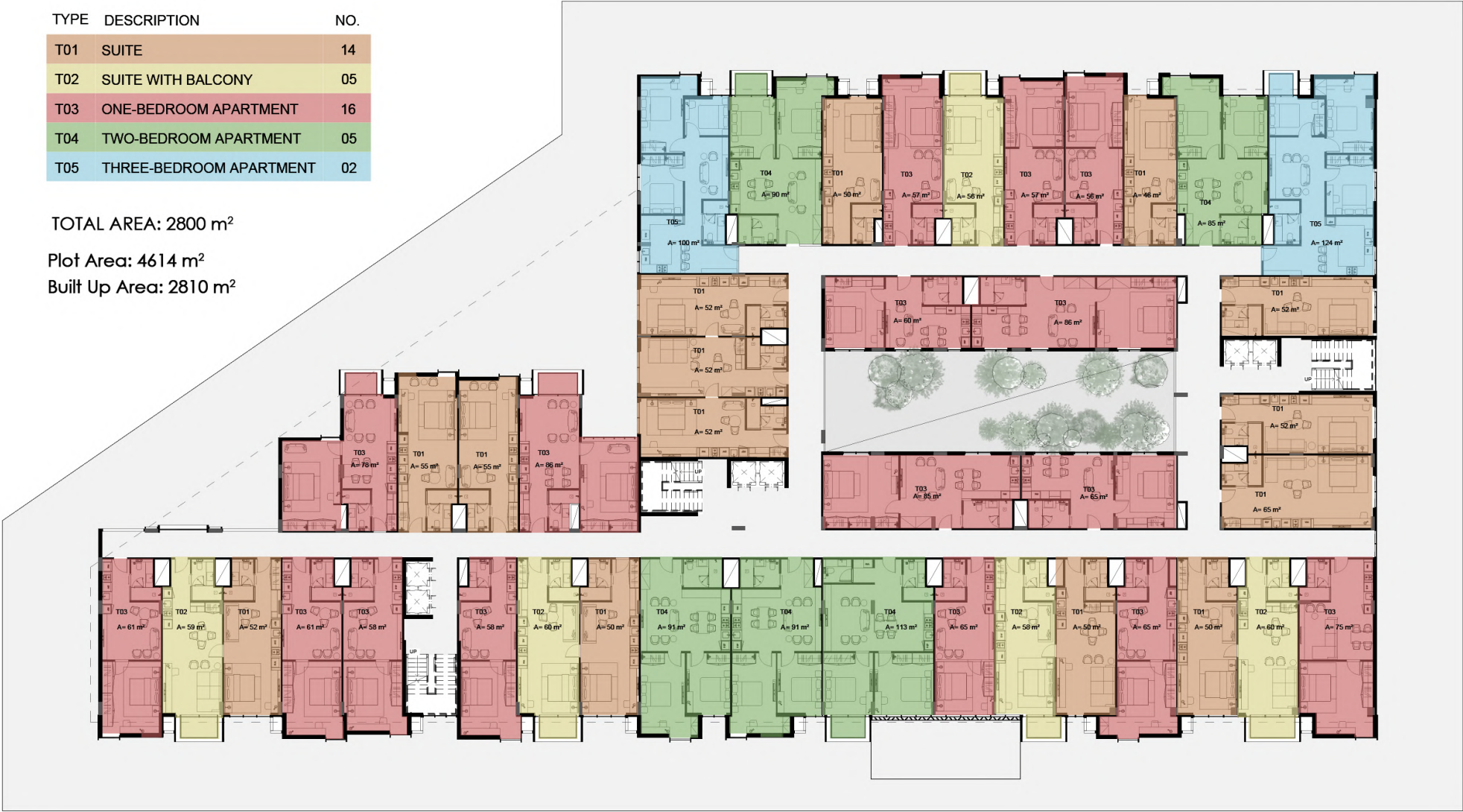


TYPE	DESCRIPTION	NO.
T01	SUITE	14
T02	SUITE WITH BALCONY	05
T03	ONE-BEDROOM APARTMENT	16
T04	TWO-BEDROOM APARTMENT	05
T05	THREE-BEDROOM APARTMENT	02

TOTAL AREA: 2800 m²

Plot Area: 4614 m²

Built Up Area: 2810 m²



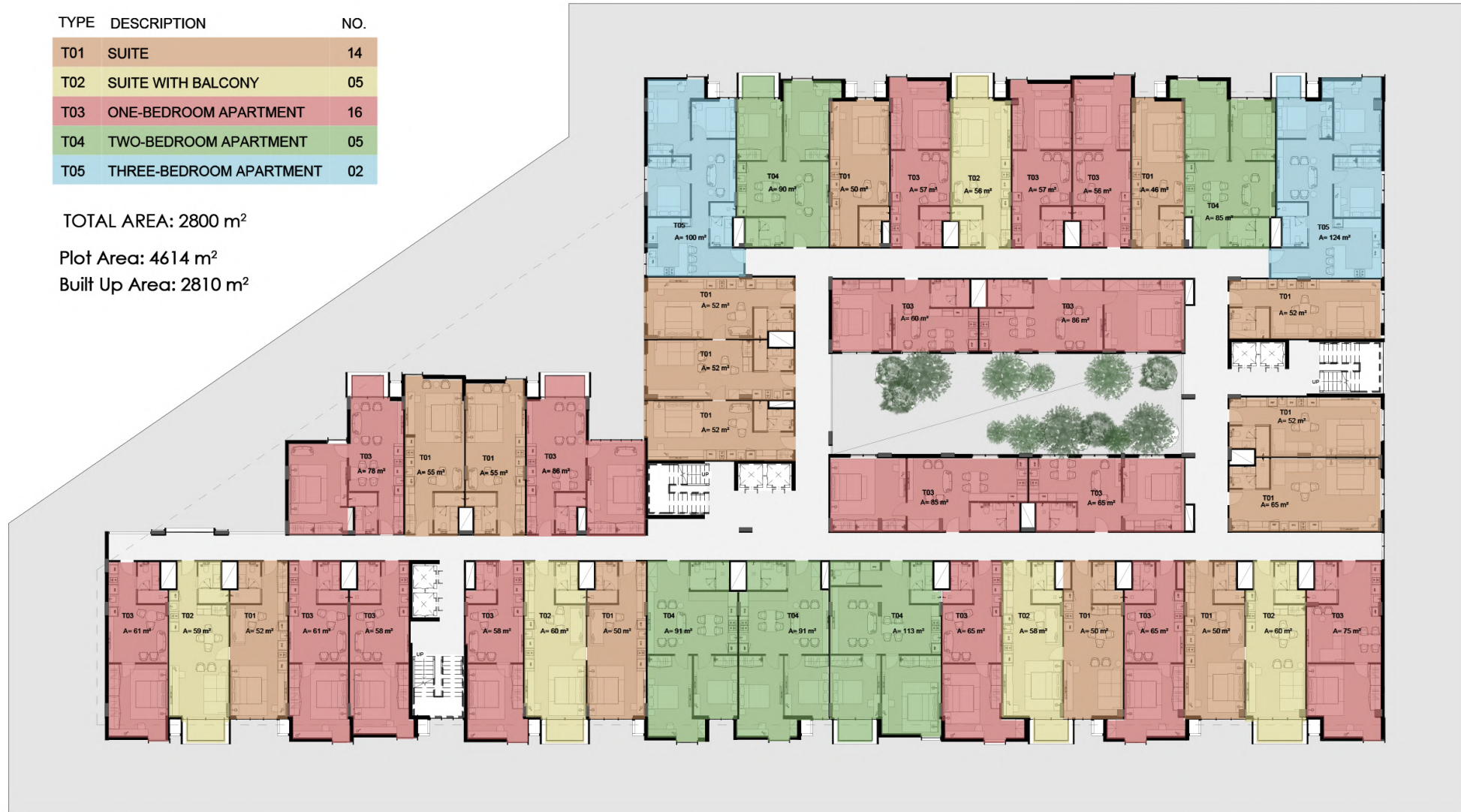


TYPE	DESCRIPTION	NO.
T01	SUITE	14
T02	SUITE WITH BALCONY	05
T03	ONE-BEDROOM APARTMENT	16
T04	TWO-BEDROOM APARTMENT	05
T05	THREE-BEDROOM APARTMENT	02

TOTAL AREA: 2800 m²

Plot Area: 4614 m²

Built Up Area: 2810 m²



Plot Area: 4614 m²

Built Up Area: 2100 m²

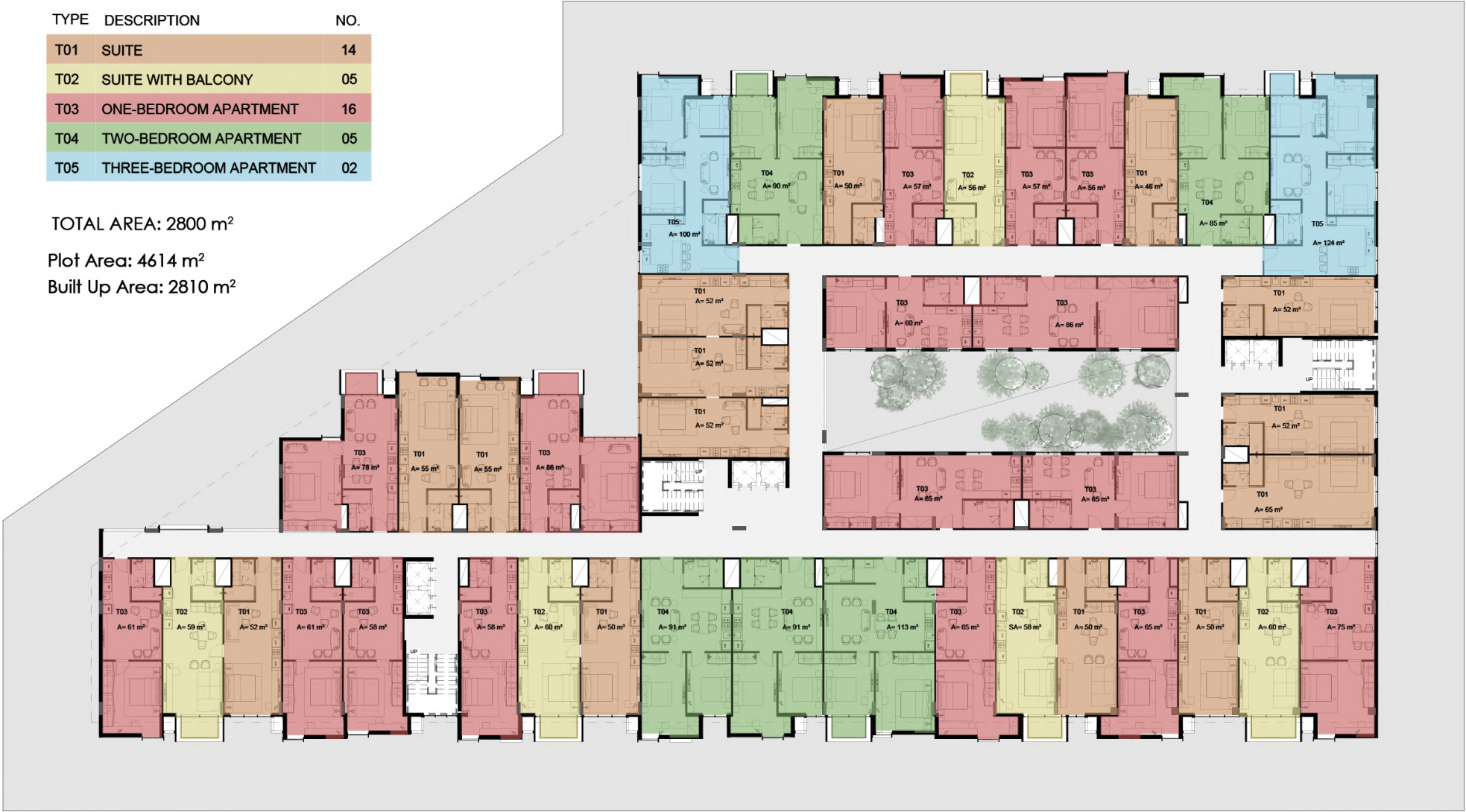


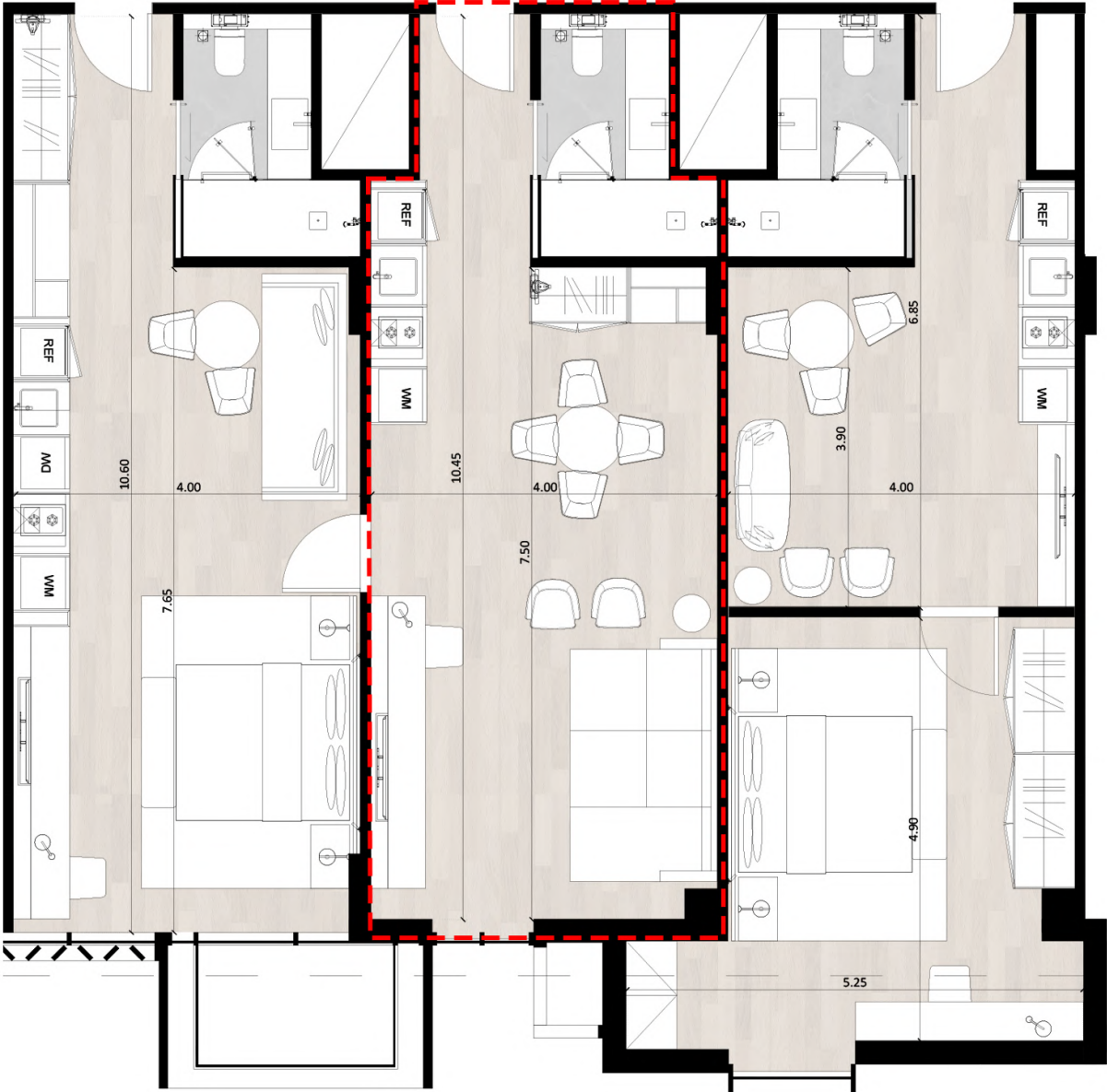
TYPE	DESCRIPTION	NO.
T01	SUITE	14
T02	SUITE WITH BALCONY	05
T03	ONE-BEDROOM APARTMENT	16
T04	TWO-BEDROOM APARTMENT	05
T05	THREE-BEDROOM APARTMENT	02

TOTAL AREA: 2800 m²

Plot Area: 4614 m²

Built Up Area: 2810 m²





Floor plan

keva
INTERIOR AND ARCHITECTURE

**IN
CM**TM

**H
TIME**
HOTELS

ARCHRETE

نزل

NUZUL

HOTEL & RESIDENCES

A New Era of Smart Living

Project by **QURTUBA**
DEVELOPMENTS